

6

5

4

3

2

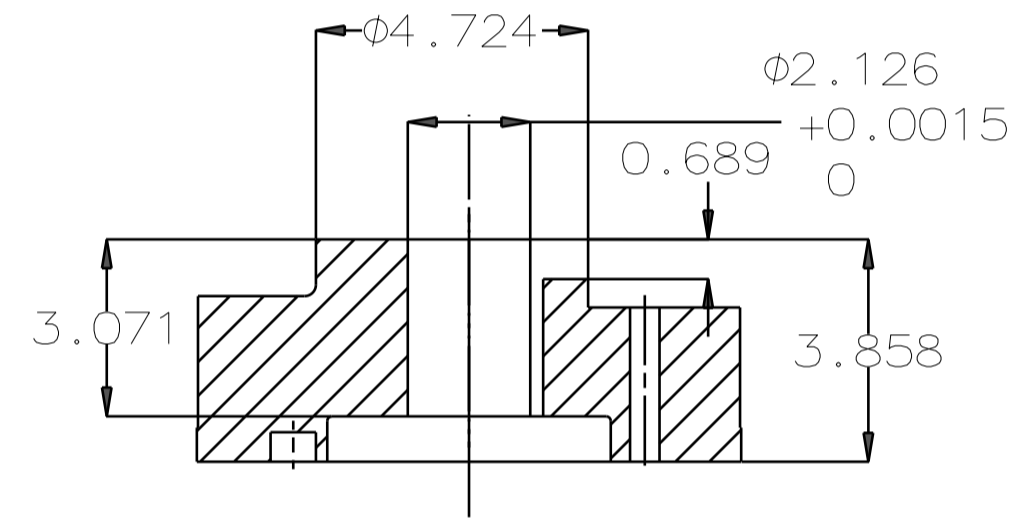
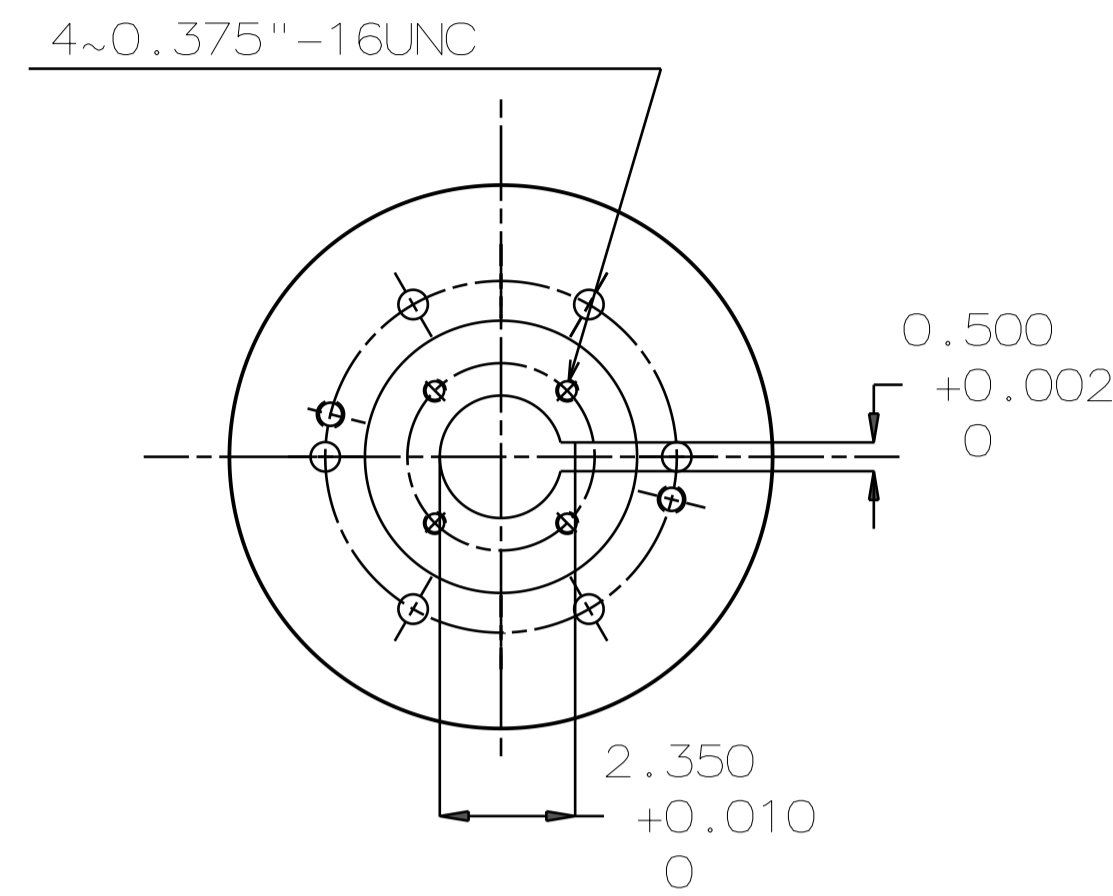
1

| TYPE   | OUTPUT |       | POLE | TIME RATING | VOLTAGE V | Hz | SYN. SPEED R.P.M |
|--------|--------|-------|------|-------------|-----------|----|------------------|
|        | HP.    | kW.   |      |             |           |    |                  |
| AEHCNH | 200    | 149.1 | 6    | CONT        | 2300/4000 | 60 | 1200             |

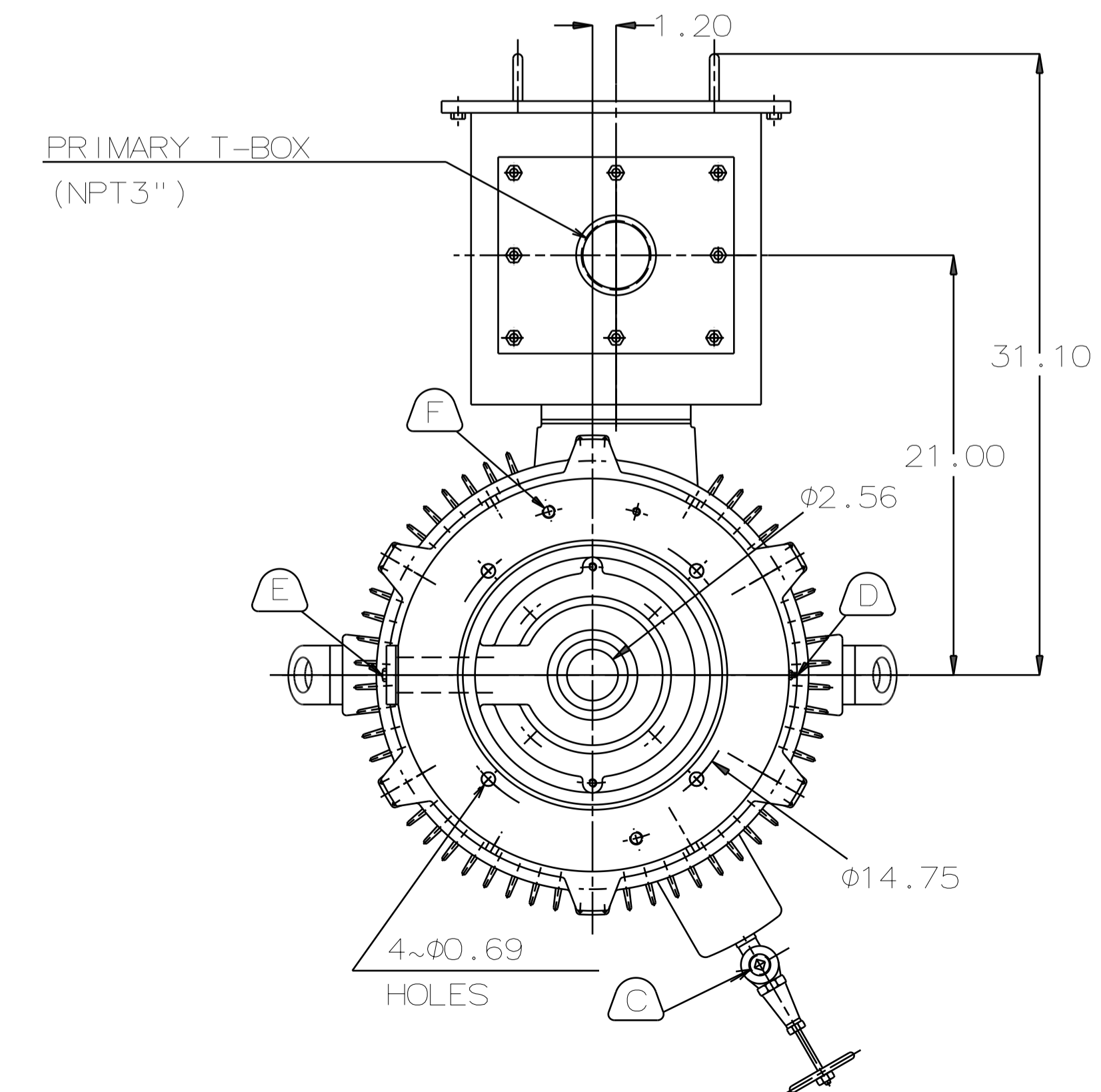
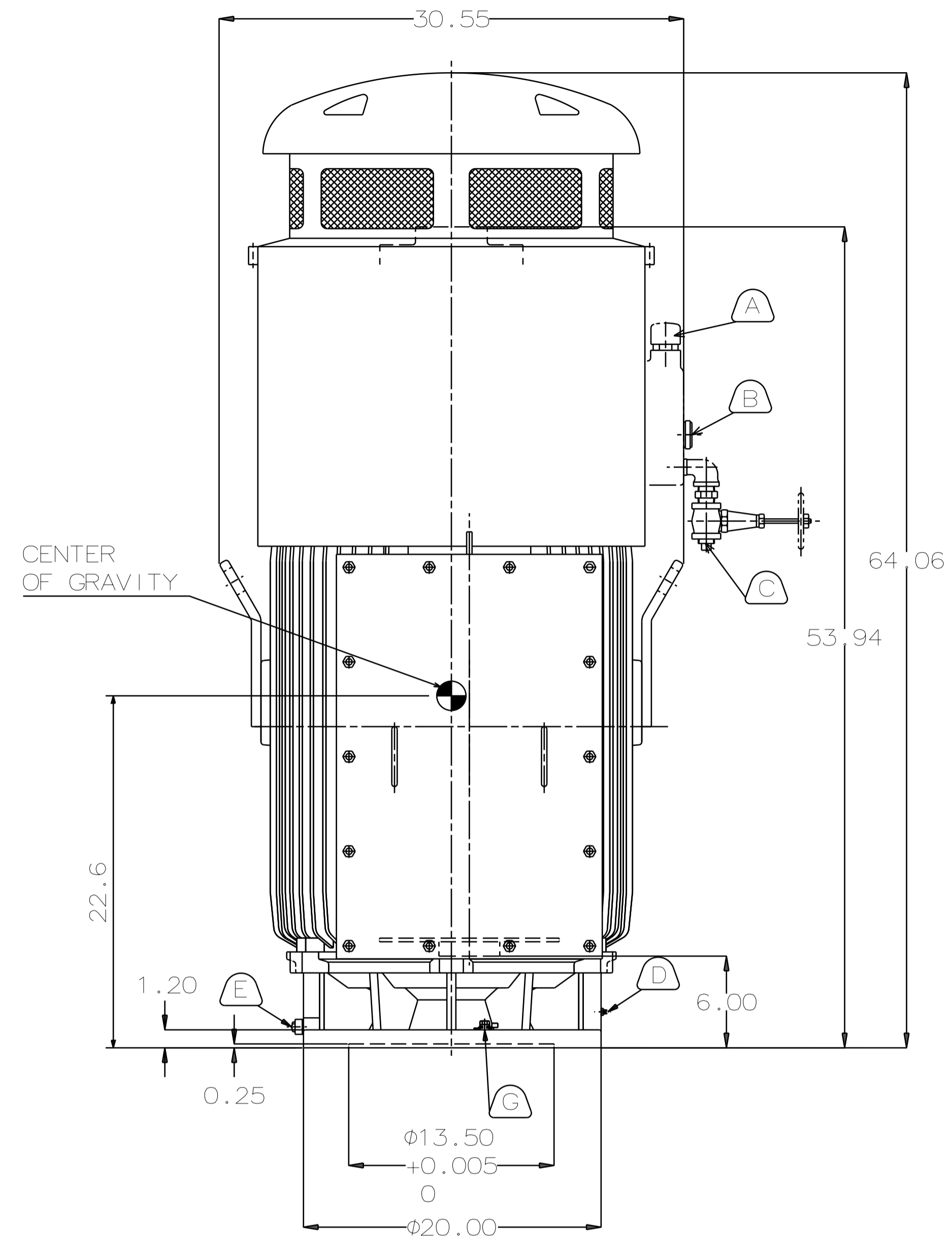
TOTALLY ENCLOSED FAN-COOLED VERTICAL HOLLOW SHAFT TYPE, SQUIRREL CAGE ROTOR

NOTE:

1. DIMENSIONS IN INCH
2. FRAME NO. 449TP
3. F CLASS INSULATION, S.F.: 1.15
4. FOR DIRECT COUPLING.
5. BEARING SIZE:  
UPPER BEARING: 7326B (UNINSULATED)  
LOWER BEARING: 6318C3 (UNINSULATED)
6. LUBRICATION:  
UPPER BEARING USE OIL.  
OIL VISCOSITY: ISO VG68 [300SSU AT 100°F]  
OIL QUANTITY: 1.8 GAL.  
LOWER BEARING USE GREASE. (MOBIL POLYREX EM)
7. ROTATION: COUNTER-CLOCKWISE [VIEW FROM TOP].
8. WITH NON-REVERSE RATCHET MECHANISM.
9. WITH GIB KEY: 0.500X0.500X3.071, 1PCS
10. APPROXIMATE WEIGHT: 3020
11. DOWNTHRUST: 11,400 LBS (L10-8800HRS)
12. REED FREQUENCY: 36 HZ
13. SPACE HEATER RATED AT 120 VOLT, SINGLE PHASE, 109 WATTS, LEADS TERMINATE IN MAIN LEAD BOX.



COUPLING  
(ENLARGED VIEW)



- A OIL FILLER [UPPER BEARING]
- B OIL GAUGE [UPPER BEARING]
- C OIL DRAIN [UPPER BEARING]
- D GREASE INLET [LOWER BEARING]
- E GREASE DISCHARGER [LOWER BEARING]
- F 2~M16 VERTICAL JACKING HOLES 180° APART IN MOTOR BASE.
- G M10 TAPPED HOLE IN MOTOR BASE WITH GROUNDING TERMINAL [R38-10] & BOLT LOCATED AS SHOWN.

|                   |             |                         |         |
|-------------------|-------------|-------------------------|---------|
| DATE              | DEC 08 2016 | OUTLINE DIMENSIONS      |         |
|                   | VHKTP2006   | 3-PHASE INDUCTION MOTOR |         |
| DWN.              | Y. YANG     | MAY. 25. 2015           |         |
| CHKD.             | R. LEE      | MAY. 25. 2015           |         |
| APPD.             | C. LIU      | MAY. 25. 2015           |         |
| TECO Westinghouse |             | DWG NO.                 | REV: 00 |
|                   |             | 4B040L407               |         |

6

5

4

3

2

1